



# The Sixth Form College

# Prospectus

# Welcome

Welcome to All Hallows Sixth Form College. The choice of where to study post-16 is an important one, and whether you are intending to continue your journey as an existing All Hallows student, or if you are considering joining us from other schools, you are very welcome. We are a vibrant, friendly and purposeful community, where every student is valued and given individual attention.

We want you to flourish and leave the College as confident, accomplished and well-rounded young individuals, fully prepared for the challenges of Higher Education and professional life in the twenty-first century.

We can offer you a supportive environment, modern facilities, enrichment opportunities, excellent teaching, and a lot of fun along the way. We are committed to making your time in the Sixth Form a period of growth and fulfilment, and to ensuring that you leave us well-equipped to succeed in your future paths, whether that be at university, embarking on an apprenticeship, or entering the world of work.

We look forward to welcoming you!

Mrs Esho

Head of College

Assistant Headteacher

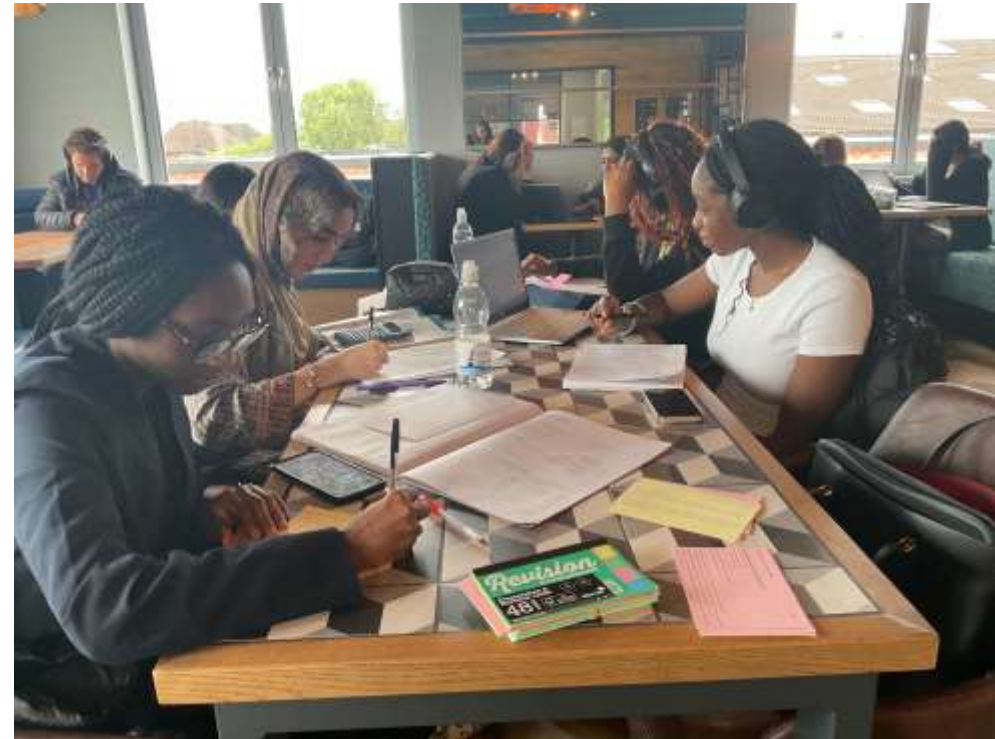


# A bit about us...

We are an inclusive community embracing students of all faiths and those who are still exploring their own faith journey. All Hallows is an environment where everyone is valued and achievements are celebrated.

Our commitment is to supporting you on your path to becoming a successful, resilient and independent learner. We will help you discover your potential and support you in your next step whether that be university, an apprenticeship or employment.

*"I would not have achieved the results I needed and gone on to study Medicine at university if it hadn't have been for the care and support I received over my two years at All Hallows. A Levels are challenging, but my teachers, Head of Year and tutor were there for me, every step of the way."*



Our vision at All Hallows is to form **happy, successful** students who reach their **full potential** and leave the school with **integrity** and **moral purpose**. We want a whole school experience that everyone would wish for their own children. We put our students at the **heart of everything we do**, guided by the **truth** and **love of Christ**.

OUR SCHOOL MOTTO

**Bear witness to the Truth**

**TESTIMONIUM PERHIBERE VERITATI**

# Why Study at All Hallows?

We have a strong reputation for academic achievement, commitment to you and for our promotion of core values.

Here are some additional reasons:

- Our students consistently achieve excellent exam results.
- Pastoral care is exceptional
- Classes are smaller than average, giving you more time with your expert teachers
- Our Pass Rate has been 100% consistently over recent years
- We offer over 30 Level 3 courses (A Level & BTEC)
- Fantastic record of students achieving entry to their first choice of university
- Each year our students secure places at Oxford and Cambridge
- We offer established Careers and Extra-curricular programmes
- We have fantastic facilities:
  - a brand new state-of-the-art café
  - Auditorium
  - fitness suite
  - extensive sports fields
  - swimming pool
  - dedicated study centre
  - subject specific learning spaces

*"Students will be able to enjoy the new social spaces for many years to come and will have the very best experience whilst studying for their A-Level and/or Level 3 BTEC courses. Our fantastic new facilities will allow our Sixth Formers to have greater sense of independence before moving on to the next chapter in their lives."*



*"What attracted me most about All Hallows Sixth Form was the small class sizes because it meant that I would get more individual attention from my teachers."*

# Supporting your success

## Pastoral Care (Personal Tutors)

You will be assigned to a tutor group with a personal tutor who mentors, monitors academic progress and supports your personal wellbeing. Tutor sessions occur daily and include both group activities and one-to-one sessions.

During Year 12, tutors will support your transition to college and help you develop skills to foster independence. During Year 13, tutors will play a key role in preparing and supporting you through your next steps for post college life.

*“ All Hallows made sure that my SEND needs were met. As well as supporting me with a laptop for my lessons, the SENCo department also made sure that I had the right access arrangements for my exams.”*

## Student Progress

Student reports are issued five times throughout your time at All Hallows and give an overview of progress in terms of attendance, effort and attainment against your target grades. There is also an opportunity for you and your parents/carers to meet your subject teachers at Parents' Evenings. We encourage your parents/carers to contact your tutor, subject teacher or Head of Year at any point in the academic year to discuss issues that might arise.

*“My tutor and Head of Year were brilliant when a member of my family was in hospital. It was really comforting to know that they were looking out for me and making sure I was supported through that difficult time.”*

## Learning Support

At All Hallows we pride ourselves on ensuring continuity of learning support for those with SEND (special educational needs and disabilities). For new students starting at our College, we will contact your previous school to establish that we are providing the correct support and/or relevant exam access arrangements.

Support at Key Stage 5 also extends to help with organisation, assessment for exam concessions, careers advice and the opportunity for work experience or volunteering for some of our learners with SEND.

*“ I was really not sure what I wanted to do after College. I had lots of discussions with the careers adviser, and he was able to arrange some work experience at a local school. Now I am happily settled on a career working with children.”*

# Supporting your success

## Careers, Medicine & Apprenticeship Support

Careers Information and Guidance at All Hallows is designed to ensure that you are supported every step of the way.

You will have access to one-to-one sessions with a qualified Careers Advisor where you will discuss and formulate unique plans.

During Year 12, where applicable, we will help you secure work experience providing insight into your intended profession as well as developing transferrable life skills.

During Year 13, you will prepare for further education, apprenticeships or work.

Those of you focused on work and apprenticeships will be provided with face-to-face meetings with key industry contacts and apprenticeship providers.

*“The Oxbridge Programme was just fantastic and without it I doubt I would be taking up my place at Oxford this year. It was pretty intense but fully prepared me for every part of the process.”*

## Dedicated Oxbridge Programme

We have a comprehensive preparation programme for 'early applicants' (those applying to Oxford or Cambridge, or to courses in Medicine or Veterinary Science) with a fantastic track record. Students will receive specialist interview practice. All students will explore university choices and alternatives and receive feedback on UCAS applications, personal statements, and CVs from your personal tutors.



# Supporting your success

## Bursaries

The **16 to 19 Bursary** is a limited fund made available by the government to students whose access to education is inhibited by financial constraints or barriers. You can get a bursary to help with education-related costs such as clothing, books, equipment, transport and refreshments at College. To consider your eligibility, our Finance Department will look at the individual circumstances of your household income. We encourage you to contact us if you feel that your family finances may impact upon your educational chances.

We also provide the **16 to 19 'Vulnerable student bursary'** where you could receive up to £1200 if at least one of the following applies:

- You are in or recently left local authority care
- You get Income Support or Universal Credit because you're financially supporting yourself
- You get Disability Living Allowance (DLA) in your name and either Employment and Support Allowance (ESA) or Universal Credit

*"I was a bit worried at first about applying for the 16–19 Bursary but in the end it was very easy and it has really helped me with transport costs. I really wanted to stay on at All Hallows but I lived quite a way from the College. Now I don't need to worry."*



# Trips and Activities to broaden your education

**3D & Graphic Design:** Day trips to museums and galleries, such as the Design Museum, MoBPA and Tate Modern. Opportunities for overseas trips are sometimes offered alongside MFL residentials.

**Art, Photography & Architecture:** Students can enjoy cross discipline London Gallery visits, exploring the incredible diversity of institutions on offer. Recent trips have explored, the Royal Academy and Tate Modern. Regular Designer in Residence Workshops along with talks and portfolio advice from former students adds breadth and Inspiration to your course.

**Biology:** Trip to 'The Spirit Collection' at The Darwin Centre of the Natural History Museum which includes an exclusive backstage tour and meetings with scientists working at the museum.

**Business (A Level & BTEC):** Visit to the Mini Factory in Oxford.

**Chemistry:** Trip to Southampton University to use their laboratories and equipment, University of Oxford Autumn Chemistry conference.

**Drama:** Practitioner workshops from 'Splendid Theatre' and 'Frantic Assembly.' National Theatre backstage tour. Drama & theatre cultural trips abroad to Athens, Greece, Venice, and Rome.

**Economics:** Visits to local business factories.

**English Language:** English Language conferences run by the English & Media Centre.

**English Literature:** Tour and theatre trip to Shakespeare's Globe. National Theatre production screenings of set texts, and other theatre trips as available (Streetcar / A Doll's House).

**Physics:** Visit to CERN in Geneva, Switzerland. Regular trips to the University of Surrey to participate in a 'Nuclear Physics' workshop, Astronomy events and attendance to lectures by esteemed academics such as Professor Jim Al-Khalili.



# Trips and Activities to broaden your education

**EPQ:** University library trip, where students can experience a higher education environment, along with learning and using higher level research skills.

**Health & Social Care:** Visits to local nursing homes and nurseries.

**History:** Opportunity to participate in the 'Lessons From Auschwitz' programme run by the Holocaust Educational Trust.

**Media Studies:** British Film Institute study days, Into film festival screenings and cinema trips

**Geography:** Trips to Snowdonia and Iceland

**Music:** Live performances of A-Level set works, Concert Tour, Trips to the West End theatres.

**PE & Sport:** University trip to use Sport Science Lab, Coaching Day at a professional football club, External revision day with an exam moderator.

**Psychology:** Trip to the Freud Museum in London. Trip to a lecture series hosted by Cara Flanagan (author of A level textbook) featuring world famous psychologists such as Elizabeth Loftus.

**Religious Studies:** 'Candle Conferences' - Theology lecture.

*"I just loved our trip to Iceland. It was an amazing experience. It really helped me to understand the context behind what I had been learning in lessons. It was also a brilliant opportunity to make new friends."*



# What students have to say about All Hallows

*"I chose to stay at All Hallows as I knew the teaching quality and facilities available would help me far more in achieving the grades I would need than other colleges in the area. Due to the small class sizes with teachers that I already knew, I felt that I would be more confident in asking for help and that I could have one-to-ones with knowledgeable subject teachers more frequently if I needed to. The individual support with an excellent quality of teaching has aided me with the challenge that A-levels bring. I am glad that I chose to stay at All Hallows as I am reassured that my further education will have every support I could need."*

*"I chose All Hallows because I was moving into the area and was attracted by the Catholic ethos, after being at a Catholic secondary school. I also chose it because it was the best College in the area academically, and visiting the Open Evening finalised my decision as I was really impressed by the facilities. I am glad that I came here because the lessons are good, the teachers are nice, and the College is a really comfortable environment. I particularly like the facilities in 3D Design - the block is very open, and I have access to lots of different equipment that you don't find everywhere. Coming to All Hallows has been a positive experience, and I found it welcoming as someone coming from a different school."*



**Lisa, year 13**

**Former student of All Hallows**

**Studying A Levels in Psychology, Art  
Craft & Design, Religious Studies**

**Career aspirations: Illustration**



**Justin, Year 13**

**Former student of St Mark's School**

**Studying A Levels in Maths,  
Physics and 3D Design**

**Career aspirations: Engineering**

# Leadership Opportunities

## Senior Students

Our Senior Students and Deputies are a team of student leaders who have the responsibility to work with the Head of College on developing the Sixth Form. They help chair the Student Council and lead on social and fundraising events such as the annual All Hallows Week (charity fundraising), the Winter Ball and Year 13 Leaver's party.

Part of their role is to act as a link between the student body and the school in driving up standards and promoting change in the Sixth Form. They also play an important role in recruitment and retention to the Sixth Form

## House Captains

Our House Captains play an important role in supporting the Heads of Key Stages 3 and 4 in the development of our whole school House system.

## Other roles

Students also take responsibility for Equality, Diversity & Inclusion, Charities, Spirituality, Sport and Media.



# Developing the person

## ENRICHMENT

### Core RE

Once a fortnight you will have a General RE lesson. This lesson is designed to engage you with a variety of political, social and religious debates to help you grow as a person. You will spend one period with a teacher and a small group debating and discussing different topics that could impact your life outside of school.

In Year 12, lessons focus on Human Dignity, covering topics such as the role of sex in society, modern slavery, fast fashion, feminism, and war and military violence. In Year 13, you will look at culture and faith, considering issues such as religion in film and TV, faith and music, politics and religion, science, and consciousness.

Students tell us that they value these lessons, for the space to discuss and debate issues that they might not ordinarily think about, in a safe, supportive yet challenging space.



### Next Steps

The Next Steps Programme, delivered in one lesson per fortnight, focuses on teaching you practical skills to help you prepare for your exams, your working life, your applications for university, apprenticeships, and jobs as well as other life skills you may need once you leave All Hallows.

Some of the skills covered include: project management, different types of reading, critical analysis, research ethics, job interview practice and budgeting.

### Personal Development

Every Wednesday afternoon is dedicated to your personal development. In the first half term this consists of whole year-group talks from a variety of speakers.

After these, students choose from a wide range of options. These might include:

- studying for an EPQ
- GCSE English or Maths re-sits
- volunteering in the community or a local primary school,
- Duke of Edinburgh
- online courses
- sports fixtures
- public speaking.

Students are encouraged to engage in a wide range of opportunities in order to support their development as young adults.

# Developing the person

## ENRICHMENT

### Enrichment



#### Core RE

We are really proud of our enrichment offer. Enrichment at All Hallows has three discrete elements, all of which are designed to help us ensure that you leave us as a well-rounded individual, ready to go into the wider world and make a difference. All students in Years 12 and 13 study one period a fortnight of **Core RE**. In addition to this, students in Year 12 have one period a fortnight for our bespoke **Next Steps** programme. And finally, each Wednesday afternoon is devoted to students' **Personal Development**.

#### Core RE

Once a fortnight you will have a Core RE lesson. This lesson is designed to engage you with a variety of political, social and religious debates to help you grow as a person. You will spend one period with a teacher and a small group debating and discussing different topics that could impact your life outside of school.

In Year 12, lessons focus on Human Dignity, covering topics such as the role of sex in society, modern slavery, fast fashion, feminism, and war and military violence. In Year 13, you will look at culture and faith, considering issues such as religion in film and TV, faith and music, politics and religion, science, and consciousness.

Students tell us that they value these lessons, for the space to discuss and debate issues that they might not ordinarily think about, in a safe, supportive yet challenging space.

#### Next Steps

#### Next Steps

The Next Steps Programme, delivered in one lesson per fortnight, focuses on teaching you practical skills to help you prepare for your exams, your working life, your applications for university, apprenticeships, and jobs as well as other life skills you may need once you leave All Hallows.

Some of the skills covered include: project management, different types of reading, critical analysis, research ethics, job interview practice and budgeting.

#### Personal Development

# Developing the person

## Personal Development

Every Wednesday afternoon is dedicated to your personal development. In the first half term this consists of whole year-group talks from a variety of speakers.

After these, students choose from a wide range of options. These might include: working on your EPQ or completing a Level 3 Sports Leader award (see following pages for more information); tutoring; GCSE English or Maths re-sits; volunteering in the community or a local primary school ; Duke of Edinburgh; online courses; sports fixtures; public speaking. Wednesday afternoons are also an opportunity for students to complete work experience or shadowing, and to hear from speakers from a range of careers and backgrounds..

## ENRICHMENT



I have been volunteering in the community, specifically supporting Afghan refugees. It's something I've found really rewarding. (Chelsea, Year 12)

I've been delivering tuition. It involves learning how to teach in the most effective way, and being able to tutor younger students so that they are able to use the support in their own revision. I work with the same three year 11 students each week. It has helped my understanding as well – and it's helpful to learn more how to engage with others. (Will, Year 12)

I spend Wednesday afternoons volunteering in school, specifically in the English department. (Robin, Year 12)

I've used the Wednesday afternoon time to complete the volunteering element of my Duke of Edinburgh Gold Award. I have been working at a bee farm. (Jilly, Year 12)

I've been taking part in public speaking personal development sessions, delivered by Farnham Rotary Club and Toastmasters, which have included structuring speeches and developing confidence. We've had the opportunity to take part in a local competition with other schools, which we won! (Phoebe, Year 12)

I have spent my Personal Development time working on my first novel. I'm up to chapter 15! (Frank, Year 12)

# Sports Leader Award

## LEVEL 3

The Sports Leaders UK Level 3 Award in Higher Sports Leadership is a nationally recognised qualification that is great for a personal statement and UCAS application (16 UCAS points).

This course gives students the opportunity to learn the skills needed to plan and deliver sessions for specialist community groups and schools and to develop their knowledge on coaching/leading on different sports.

It helps to develop confidence and the ability to communicate effectively with other people and peers. The course is of value to those who wish to further develop their coaching skills or progress onto a career involving any leadership

- Unit 1 – Developing leadership skills
- Unit 2 – Plan, lead and evaluate a sport/physical activity event
- Unit 3 – Lead safe sport/physical activity sessions
- Unit 4 – Plan, lead and evaluate a sport/physical activity sessions for children
- Unit 5 – Plan, lead and evaluate a sport/physical activity sessions in the community
- Unit 6 – Plan, lead and evaluate a sport/physical activity sessions for disabled people

Learners will gain a lot of coaching experience through various means.

### Entry Requirements

Preferable to have coaching experience prior to starting this award. Candidates will be selected based on attitude and performance observed in previous courses.

Sports Leaders are seen as Ambassadors of the school and expected to assist with cross college events.



### Assessment

Assessment is through portfolio work, practical demonstration, community work and the running of a major sports event for local primary schools.

### What it can lead to

As a nationally recognised qualification it is an excellent stepping stone to Higher/Further education, voluntary or paid work in sports development, leisure management, teaching and coaching sport.

# Extended Project Qualification (EPQ)

## LEVEL 3

### Entry Requirements

Grade 7 or above in either English

### Assessment

You will produce a production log, verified by the supervisor, a written report, supplementary evidence and a presentation

EPQ can be taken alongside an A Level or BTEC course and is an independent piece of work. Instruction and support is provided but the project is self-guided, and the subject content is your choice.

The EPQ may be based on a variety of forms and contexts such as written report, research project, essay, design brief for a product, create an artefact, produce a play or other performance.

The EPQ demonstrates your ability to work independently and develops skills valued by Universities and employers like project management, problem solving and decision making, presentation skills, communication skills.

The EPQ can provide much needed UCAS points for a university application and you can refer to the EPQ in your personal statements for UCAS and interviews.

At All Hallows, the EPQ is complete by

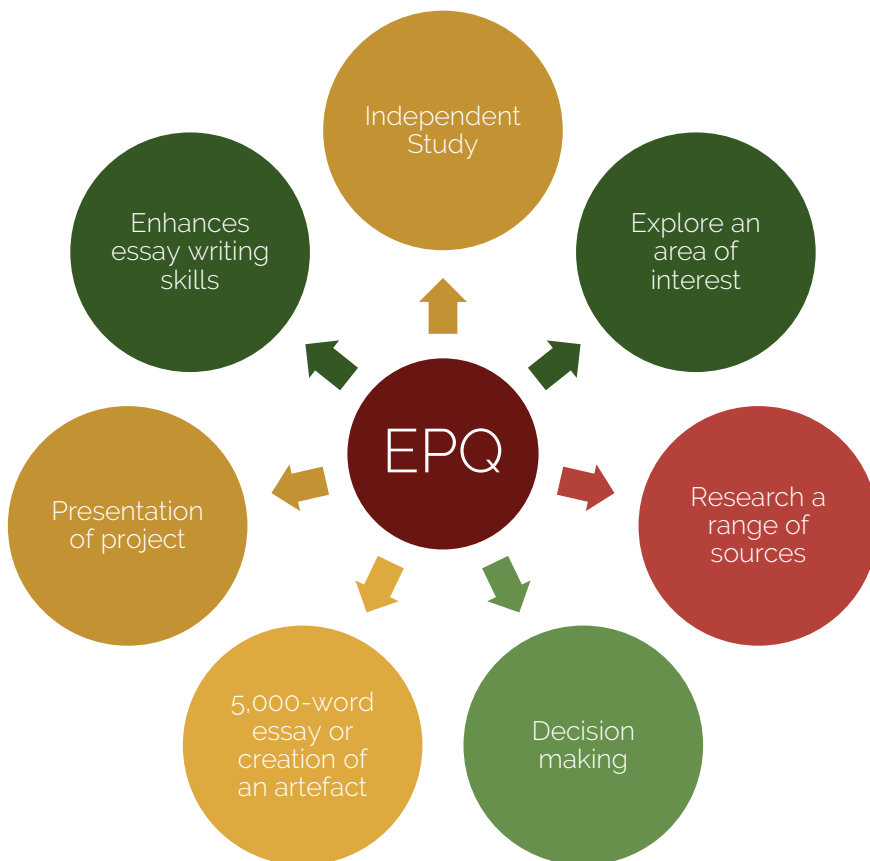
November of Year 13, so you can concentrate on your other qualifications

### What it can lead to

The EPQ will help you impress University, Apprenticeship admissions and Employers, as it shows you to be a self-starter, well-motivated and independent thinker.

If you choose a topic relevant to your chosen course or career, it demonstrates you have a real passion for the subject or job

If the topic is not specific to career or education aspirations, then it can still be used to talk about at interviews and showcase the transferable skills you have learnt during the process



# Programmes of Study

Our students do really well at All Hallows and we offer a broad curriculum of varied pathways. We will work with you to make sure that you choose the right subjects according to your academic strengths and your chosen career path.

At All Hallows you can choose from a wide range of A Levels, Level 3 BTECs and or a combination of both. We also offer the Extended Project Qualification at AS level too. You can find details of all the subjects we offer later in this prospectus. In addition to your formal qualifications, you will also study core RE and engage in a wide range of enrichment opportunities to extend your knowledge and understanding.

## A Levels

Students wishing to follow the A Level route will normally choose three subjects to be studied throughout the two years, leading to a final examination or combination of coursework and examination.

Some students who wish to progress in to medicine, engineering or aspire to study at Oxbridge, may choose to take four subjects.

## Vocational Courses

BTECs are more practical, work related and are the equivalent to A Levels. Assessments consist of a mixture of coursework and exams.

Each course is nationally recognised and offers an excellent route to higher education, an apprenticeship or employment.

## Combined courses

Students at All Hallows are offered the opportunity to study a combination of BTECs and A Levels.

The emphasis is on finding the right course for you so that you can be happy and successful.

## ENTRY REQUIREMENTS

You must have achieved a minimum of five strong passes (9-5) at GCSE in order to pursue your studies at All Hallows. This is because we offer Level 3 qualifications.

In addition to this general entry criteria, access to each course is determined by individual GCSE requirements. Subject requirements are detailed in the course information pages.

*"I wasn't sure whether I should do A Levels or BTECs. At All Hallows I was given really good advice and I ended up taking two BTECs and one A Level."*

[3D Design](#)  
[Applied Science](#)  
[Architecture](#)  
[Art, Craft & Design](#)  
[Biology](#)  
[Business BTEC](#)  
[Business Studies](#)  
[Chemistry](#)  
[Computer Science](#)  
[Drama](#)  
[Economics](#)  
[English Language](#)  
[English Literature](#)  
[Environmental Science](#)  
[French](#)  
[Further Mathematics](#)  
[Geography](#)  
[German](#)

[Graphic Design](#)  
[Health and Social Care](#)  
[History](#)  
[Information Communication  
& Technology](#)  
[Mathematics](#)  
[Media Studies](#)  
[Music](#)  
[Photography](#)  
[Physical Education](#)  
[Physics](#)  
[Politics](#)  
[Psychology](#)  
[Religious Studies](#)  
[Sociology](#)  
[Spanish](#)  
[Textiles](#)  
[Sport](#)



## NOTES

It is possible for you to 'blend' A Level and BTEC qualifications.

You will also be timetabled onto a Core RE and Next Steps courses exploring issues relevant to your life.

If you do not attain a Grade 4 in English Language or Mathematics at GCSE you will be supported in continuing with these subjects in addition to your A Level and/or BTEC programmes.

*Please note that our Curriculum offer is subject to review. Course availability is subject to student demand.*

# How do I apply?

All applications are made via **Applicaa** – you can find the link on our website at <https://www.allhallows.net/sixth-form-applications.html>

All applicants are interviewed.

For our current All Hallows students, these interviews will take place during the school day in the Autumn and Spring terms.

Applicants from other schools will be invited to one of a series of Interview Evenings with senior members of staff, where you can meet other applicants.

Offers are made and accepted via Applicaa. There will be an Induction Day for all students who have accepted their places in June, after the GCSEs have finished.

We will keep in touch with all applicants throughout the year via our **College Connection** newsletter – keep an eye out for these as they contain all of the key dates to be aware of, as well as interesting insights into College life! You can see all of the past issues on our website here: <https://www.allhallows.net/college-newsletters.html>



## Entry Requirements

Grade 5 in Design & Technology.

Students should have studied Resistant Materials GCSE, however students with Graphic Products or Textiles GCSEs will find the course accessible.

All students with a strong interest in the subject will be considered.

## Assessment

Self-directed study 60%

Externally Set Assignment 40%



# 3D Design

## A-LEVEL

The course involves a range of practical and folder-based work focusing on ceramics, sculpture, exhibition design, design for theatre, television and film, interior design, product design, environmental and architectural design, jewellery/body ornament, 3D digital design.

You will study both contemporary and traditional design techniques whilst exploring a range of media; learning about a variety of design styles, genres and traditions based around both European and non-European examples.

In the first year we use the skills and techniques learned to create two prototypes based on the study of designers, processes and materials.

There is an opportunity to create work by hand and CAD/CAM, and using various software on the computer, whilst theoretical work and experimental techniques are recorded in sketchbooks.

### What it can lead to

This can lead to a huge variety of careers including; environmental lawyer, tourism officer, transport planner, landscape architect, sustainability consultant, town planner, GIS officer, cartographer, land surveyor, disaster and emergency planner, climate change analyst, meteorologist, air pollution analyst, coastal engineer.

# Architecture

## A-LEVEL

A Level Architecture at All Hallows is the only course of its kind in the area. A practical, creative and theoretical subject focused purely on the exploration, critique and design of the built environment.

A Level Architecture is an art specialist subject that uses as its foundation the OCR Critical and Contextual Studies in Art specification. It is principally a design based course which incorporates the conception and realisation of ideas underpinned with critical theory and technical understanding.

This is a truly innovative subject which spans a range of disciplines employing elements from Art, Design, Engineering, History, Geography and Critical Writing ensuring that every student has the breadth of understanding required to create imaginative and challenging structures that have their grounding in reality.

Students will create a journal record of their ideas, present research and participate in field trips and will produce a portfolio of work to include drawings, computer aided rendering and Contextual studies.

Completion of this course will set you up beautifully for undergraduate study in the Architecture, Interior Architecture or Interior Design but would also give you an incredibly coherent and inspired portfolio to support any design based subject.

### Assessment

Portfolio 60%

Exam 40%

### Entry Requirements

Grade 6 in Art or Design & Technology

Grade 5 in Mathematics

### What it can lead to

Architecture, Interior Architecture and Interior Design as University choices.

Additionally, any design subject will appreciate the skills and knowledge on show in your portfolio. Town planning, Engineering and Construction are also fields that could be complemented by an understanding of the Built Environment.

The majority of students who take this course get offered their first choice Architecture or Design based Degree course.



# Art, Craft & Design

## A-LEVEL

The A level Art and Design course is an intensive re-evaluation of your skills, technique and art practice. We will equip you with a vast array of skills crossing all media but always using as its foundation and explorative approach to drawing.

By re-establishing and developing core skills you will increase the freedom of creativity and conceptual understanding. Supported always by contextual studies, this course is a holistic and dynamic investigation into the fundamentals of art and will allow you to fully understand and take ownership of your creative potential.

It is a very challenging course and you must be self-motivated and resourceful but ultimately enthusiastic.

### Entry Requirements

Grade 6 in Art, Textiles or Graphic Design

### Assessment

60% of your mark is based on your coursework project which requires the production of a sketchbook of research and development along with a variety of well-developed outcomes.

40% is based on the controlled assignment which follows the same format as the project only you select a starting point from one given by the exam.

### What it can lead to

Professional Artist or Designer are aspirations of many but this subject is often the choice considered most relevant to many HE courses in the arts due to its breadth of subject matter and the necessity to understand the context and concept in the work you make.

However, this art discipline in addition to great creativity often requires high level of problem solving and this is dual skills are often prized by many industries.



# Biology

## A-LEVEL

Across the 2 years of the A-Level course you will cover:

1. Biological molecules
2. Cells
3. Organisms exchange substances with their environment
4. Genetic information, variation and relationships between organisms
5. Energy transfers in and between organisms
6. Organisms respond to change in their external and internal environments
7. Genetics, populations, evolution and ecosystems
8. The control of gene expression

You will also carry out a number of practical exercises which will be recorded. Questions based on aspects of these set 'Practical' will be assessed in the written exam papers.

### What it can lead to

Medical research, doctor, clinical molecular geneticist, nature conservation officer, pharmacologist, research scientist, vet, secondary school teacher, marine biologist, or dentist.

### Entry Requirements

Grade 7 in Biology or Grade 77 in Science

Grade 6 in Mathematics

### Assessment

Three external examinations



# Business Studies

## A-LEVEL

### Entry Requirements

Grade 5 in either English

Grade 5 in Mathematics

### Assessment

Three external examinations



Over the course of this A Level you will study four units:

- Marketing and people
- Managing business activities
- Business decisions and strategy
- Global business

Emphasis is placed on realistic businesses, problems and opportunities throughout, students develop an understanding of how business functions such as marketing, finance, human and physical resources work together to form a cohesive business.

The course offers a problem-solving and dynamic approach: with a focus on business choices, how businesses respond to the changes they face, and an understanding of the current issues that impact on business.

It gives you the opportunity to look at today's global world ensuring that you develop an understanding of current global issues that impact on businesses.

### What it can lead to

Possible career choices are in the field of management, marketing, finance, accounting, banking, retailing, human resources, recruitment, manufacturing, and government.

The skills you will gain on this course will allow you to make a valuable contribution to any business in the future.

# Chemistry

## A-LEVEL

Across the 2 years of the A-Level course you will cover:

3.1 Physical chemistry - Atomic structure, Amount of substance, Bonding, Energetics, Kinetics, Chemical equilibria and Le Chatelier's principle oxidation, reduction and redox equations, Thermodynamics, Rate equations, Equilibrium constant  $K_c$  for homogeneous systems, Electrode potentials and electrochemical cells, Acids and bases

3.2 Inorganic chemistry - Periodicity, Group 2, the alkaline earth metals, Group 7, the halogens, Properties of Period 3 elements and their oxides, Transition metals, Reactions of ions in aqueous solution

3.3 Organic chemistry - Introduction to organic chemistry, Alkanes, Halogenoalkanes, Alkenes, Alcohols, Organic analysis, Optical isomerism, Aldehydes and ketones, carboxylic acids and derivatives, Aromatic chemistry, Amines, Polymers, Amino acids, proteins and DNA, Organic synthesis, Nuclear magnetic resonance, Spectroscopy, Chromatography

### What it can lead to

Chemistry is a very highly regarded A level. Any scientific degree course would accept a good grade in Chemistry. Related careers include typical science related careers such as medicine, veterinary, engineering, environmental, forensic or materials scientists, as well as other careers like accounting and business.

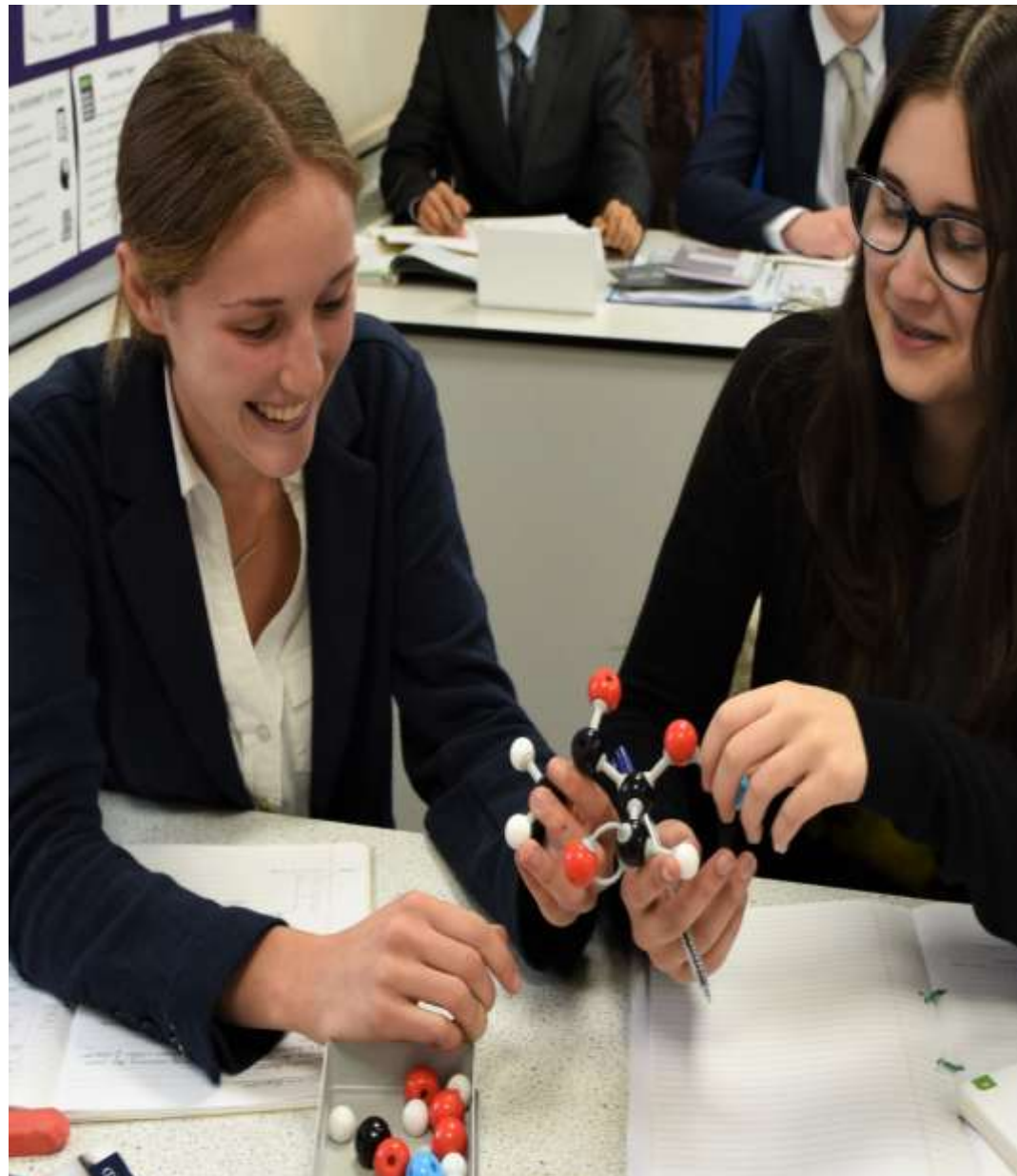
### Entry Requirements

Grade 7 in Chemistry or Grade 77 in Science

Grade 6 in Mathematics

### Assessment

Three external examinations



# Computer Science

## A-LEVEL

### Entry Requirements

Grade 6 in Computer Science

Grade 6 in Mathematics

If Computer Science was not studied, applicants should speak with the Computing Department.

### Assessment

Assessment takes place at the end of year 2 via two exams and a coursework project.

Component 1: Programming and System development 40%

Component 2: Computer Architecture, Data, Communication and Applications 40%

Component 3: Programmed Solution to a problem 20%

A two-year course which will give you the opportunity to become an effective designer and implementer of computing solutions.

You will learn how to design, write and test programs, as well as how the program you have written is turned into an understandable form for the computersystem. You will learn how a computer system deals with data in relation to input, processing, storage, transmission and output. Computer Science principles such as abstraction, decomposition, logic algorithms and data representation will be studied.

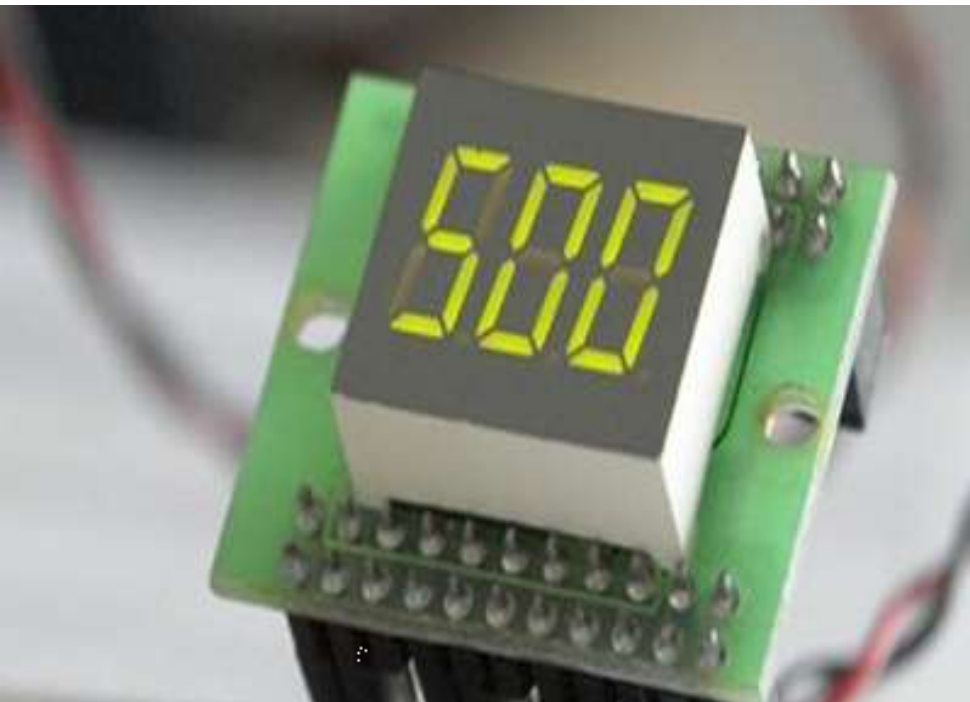
You will learn problem solving skills, the ability to analyse a problem and then solve the problem by thinking creatively, logically and critically. Mathematical skills will also be developed, such as working with Binary, the language of the computer.

Other mathematical skills learnt will be the use of Boolean Algebra. A primary skill that will be developed is the ability to think logically as, with mathematics, in computer science the answer is either correct or incorrect.

Using logic to achieve the answer is a key skill; however, we will also look at artificial intelligence where it is possible to achieve an answer that is not quite correct!

### What it can lead to

Software engineering, computer science, forensic computing, and computer games technology.



# Drama

## A-LEVEL

Across the 2 years of the A-Level course you will cover a range of texts from Greek Theatre to the present day. You will study 5 plays in detail from the perspectives of both actor and director. These plays will provide the basis for both written and practical work. The practical work will be 3 extracts from student selected texts and also a devised performance in Year 2.

In Year 1 you will work in groups to explore the plays practically and academically. You will perform extracts from set texts, keep an assessable notebook and study 2 plays. You will be expected to write essays on these plays.

In Year 2 you will continue to work on your set texts for the final examination and for practical assessment. You will also develop, in conjunction with your teacher and other students, a devised performance that is internally assessed.

### Entry Requirements

Grade 6 in Drama, if studied.

Grade 6 in English Literature.

### What it can lead to

It can lead to a career in theatre, film, media, television, journalism, law, marketing, teaching, journalism, public relations, psychology, social work, human resources, management, hospitality, sales, social work.



### Assessment

- Open book examination on two set plays. One question on a live theatre performance.
- A devised theatre performance influenced by a set practitioner. A working notebook of the process.
- Practical explorations of three extracts, one of which is assessed practically. A reflective report analysing and evaluating the extracts.

## Entry Requirements

Grade 6 in either English

Grade 6 in Mathematics

## Assessment

Three external examinations

# Economics

## A-LEVEL



Economics is a traditional analytical subject, involving mathematics, communication and literacy skills. Economics graduates hold key positions in the business world, banking and finance, politics and administration, journalism and media.

There is hardly any area of human life that does not benefit from a knowledge and understanding of Economics.

Everyone is affected by economics, yet few people really know what it is or understand it.

This course gives you the opportunity to find out about the issues which shape all our lives today.

Over the course of the A Level, you will study four units.

- Introductions to markets and market failure
- The UK economy – performance and policies
- Business behaviour and the labour market
- A global perspective.

### What it can lead to

Studying Economics can lead to a wide variety of University courses including Economics, Business, Geography, Law, Accounting, History, Social Sciences such as Politics, and many more.

An A Level in Economics shows you have excellent research and analysis skills, and knowledge of current events.

# English Language

## A-LEVEL

In the first year, you will study a variety of topics which will develop your understanding of different aspects of English: how spoken language differs from written language; how different accents and dialects shape the way we think about people; how men and women use language differently and for different purposes; and how our occupations shape the way we use English.

You will learn these areas through the application of key concepts such as: lexis, grammar, semantics, pragmatics, and discourse.

In the second year, you will develop the skills learned within the first year. You will apply the key concepts to texts in greater detail, looking at how children learn language and how the English Language itself has developed over time.

The coursework element provides greater room for independent study relating to each candidate's chosen area of study.

### Assessment

Three external examinations

One piece of coursework

### Entry Requirements

Grade 6 in either English

### What it can lead to

Careers including writing, journalism, teaching, advertising and marketing, PR, law and research.



# English Literature

## A-LEVEL

In the first year, students will study a variety of units that will include works by modern writers, playwrights and poets who provide us with our rich literary heritage. You will develop an understanding of these areas through the application of key skills such as: essay writing, argument construction and close textual analysis, focusing on language, structure and form.

In the second year, students will develop the skills learned in the first year. Students will apply the key skills to a greater range of texts, representative of the whole Literary Canon. You will be expected to analyse texts in greater detail and with more independence and there is more room for independent study within your chosen area of interest.



### Entry Requirements

Grade 6 in English Language

Grade 6 in English Literature

### Assessment

Two external examinations

A critical study of two texts

### What it can lead to

- Writing
- Journalism
- Teaching
- Advertising and marketing
- PR
- Law
- Research
- The arts and theatre

# Environmental Science

## A-LEVEL

Environmental Science is a current and interdisciplinary subject that unusually combines the scientific knowledge about our planet with the understanding about how we (humans) interact with the planet. This is a refreshing subject that will take you on an adventure to understand the current and future situation of our planet by looking at the past and current issues that are threatening our survival and the environment. This will provide you with the opportunity to learn about and discuss pressing problems, such as ensuring that human needs are met in a sustainable way, so that everyone has access to clean water and air, and the resources required for agriculture, forestry, aquaculture and industrial activity.

If you are passionate about the environment and our planet and have the desire to contribute to a better future, if you love watching documentaries from naturalists such as David Attenborough and Steve Backshall, or if you're just curious about our planet, then Environmental Science will be the right subject for you. The holistic approach of Environmental Science makes it an enriching and entertaining subject that can open the door to an exciting range of career options.

### What it can lead to

Careers including Environmental Scientist, Environmental Engineer, Wildlife biologist, Environmental Geologist, Ecologist, or Environment Officer.



### Assessment

Two external examinations

### Entry Requirements

Grade 5 in English Language.

Grade 5 in Mathematics

Grade 66 in Science



# French

## A-LEVEL

### What it can lead to

- Translator
- Interpreter (including UN, defence forces, police force)
- Foreign language intelligence
- Tourism/ travel industry
- Teacher- in both the UK and abroad
- International Law
- Medicine/health care - because of Latin and medical terms
- Economics or finance
- Journalist/reporter
- Military (human intelligence collector, intelligence analyst),
- International sales manager
- Diplomat
- Flight attendant/ pilot
- Work in one of the 29 countries in the world which has French as an official language
- Work and live in Canada (they require fluency in both English and French to get a visa),

Learning a Modern Foreign Language helps develop effective communication and analytical skills and enhances social, cultural and intercultural awareness.

You will gain a useful knowledge of and insights into French-speaking cultures as well as valuable skills for foreign travel, further education and employment.

Themes you will study include:

- Changes in family structure
- Education in France and student issues
- Working life in France and sexual equality
- Music
- Media
- Festivals and Traditions
- Integration and Multiculturalism
- The rise of the Extreme Right in France
- The Occupation of France during the Second World War
- The French Resistance

### Assessment

Three external examinations

### Entry Requirements

Grade 6 in French

# Further Mathematics

## A-LEVEL

For your A level you will study:

- Imaginary numbers. Yes, you read that correctly!
- What is a matrix and what are they used for? As it turns out, everything from whale population modelling to predicting where a subatomic particle might end up.
- A different co-ordinate system to your x-y axes called polar co-ordinates. Knowledge of this will allow you to study further co-ordinate systems which are much more useful for cylindrical or spherical symmetry (such as for a galaxy or in the turning components of a vehicle).
- Interpret and model the real world using Differential Equations, the equations which scientists use to describe our world. Electromagnetism, heat diffusion, sound, population modelling, climate modelling, general relativity, cosmology and quantum mechanics are all examples of phenomena or fields which we can understand with sets of differential equations. In some cases, we just need one equation!
- In addition, there will be opportunity to further study: "classical" mechanics, statistics, pure and decision mathematics.

### Entry Requirements

Grade 8 in Mathematics

### Assessment

Eight external examinations

### What it can lead to

Careers in accountancy, engineering, data analysis, finance, meteorology and teaching



## Entry Requirements

Grade 6 in Geography if studied

Grade 6 in either English

## Assessment

Three external examinations

One independent investigation into a geographical issue of your choice.



# Geography

## A-LEVEL

Over the two years, you will study:

1. Tectonic processes and hazards
2. Glaciated landscapes
3. Water systems and water insecurity
4. Carbon cycles and energy insecurity
5. Diverse places
6. Globalisation
7. Global Superpowers
8. Global Development and connections (Health, human rights and intervention, migration, identity and sovereignty)

Geography is considered a 'facilitating' subject where you develop a range of skills as well as an informed and critical understanding of current affairs and contemporary global issues.

### What it can lead to

Geography can lead to a huge variety of careers including; environmental lawyer, tourism officer, transport planner, landscape architect, sustainability consultant, town planner, GIS officer, cartographer, land surveyor, disaster and emergency planner, climate change analyst, meteorologist, air pollution analyst, coastal engineer.



## Entry Requirements

Grade 5 in Design & Technology or Art.

Students should have studied Graphic Products or Art at GCSE, however students with Textiles or Product Design GCSE will find the course accessible.

Students with a strong interest in the subject will be considered.



A Level Graphic Design students in Berlin, on a Street Art Walking Tour

# Graphic Design

## A-LEVEL

Are you interested in social media, web-design, branding and packaging? Can you recognise logos and slogans for different brands?

This course involves a range of creative and digital work focusing on branding for online and print, advertising, illustration, animation and character/game design.

You will study both current and traditional design techniques whilst exploring a range of materials. In the first year you will create a brand identity for a range of products, followed by a contextual study contributing to a themed range of mixed-media postcards.

There is an opportunity to create artwork by hand and using various industry-standard software on PC or tablet, whilst theoretical work and experimental techniques are recorded in sketchbooks.

### Assessment

Self-directed study 60%

Externally Set Assignment 40%

### What it can lead to

Graphic Design will prepare students for a future career in Graphic Design, Illustration, Game Design, Web design, Fine Art, Product Design, Textile Design, Animation, Computing, Architecture, Interior Design, Photography, as well as be a welcome A-level for degree subjects that are not art related.

We are proud that the vast majority of our students choose to continue with Graphic Design as their course choice for university study. Some students have previously chosen to study Graphic Design in a combined course with Illustration or Web Design, and selected well-recognised and respected institutions.

# History

## A-LEVEL

Over the course of the A Level, you will study four units. Three of these will be assessed through exams in the summer of Year 13. The fourth is a coursework essay to be completed in Year 13.

These are:

- British period study and enquiry - England 1445-1509: Lancastrians, Yorkists and Henry VII
- Non-British period study - Democracy and Dictatorships in Germany 1919-1963
- Thematic study and interpretations - Rebellion and Disorder under the Tudors 1485-1603
- Independently researched essay (3000-4000 words)

### What it can lead to

As a facilitating subject it can lead to careers in various fields such as journalism and the media, the civil service, government, education, the heritage sector, law, marketing, business finance and many more.

### Assessment

Three external examinations

One topic-based coursework essay

### Entry Requirements

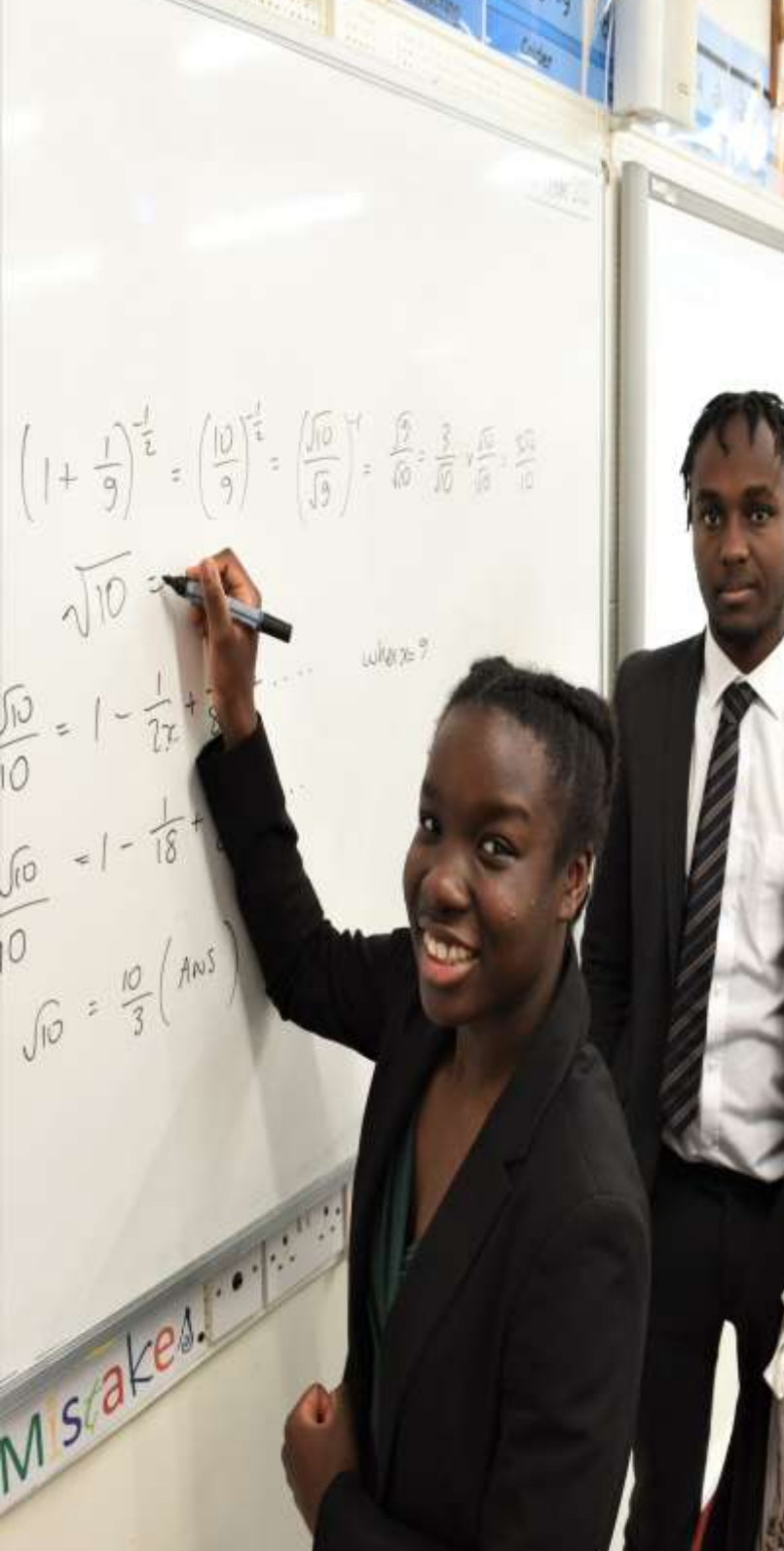
Grade 6 in either English

Grade 6 in History, if studied



# Mathematics

## A-LEVEL



For your A level you will study:

- Algebra.
- Addition is the inverse of subtraction, multiplication the inverse of division, square rooting the inverse of squaring, are there other functions and inverse? Yes!
- How to deal with the infinitesimally small and infinitely large.
- Learn about how mathematical models can be used to describe the real world, particularly flow-rate problems, "classical" mechanics and population.
- How to simplify and explain information in a large set of data, predict outcomes using mathematical techniques and approach hypotheses and modelling with mathematical rigour.

### Entry Requirements

Grade 7 in Mathematics

### Assessment

Four external examinations

### What it can lead to

Careers in accountancy, engineering, data analysis, finance, meteorology and teaching

# Media Studies

## A-LEVEL

### Entry Requirements

Grade 5 in either English

### What it can lead to

It can lead to careers within a wide range of media industries including television, radio, film, magazines, news and journalism, advertising, marketing and online media.

### Assessment

The course is assessed by one exam (70%) and practical production coursework, accompanied by a statement of intent (30%).

An understanding of the media is essential to inform the decisions we make in today's world.

If you are interested in the following questions, then Media Studies might be the subject for you.

- What impact has the internet and social media had on audiences and the media?
- Should we be worried that the vast majority of media companies are owned by a very small number of people?
- How far is it possible to represent reality on screen or in the news?

Media Studies engages students in the in depth study of media products in relation to the four areas of the theoretical framework:

- media language
- media representation
- media industries
- media audiences.

Students are required to study media products from all of the following media forms:

- audio-visual forms (TV, film, radio, advertising and marketing, video games and music video)
- online forms (social and participatory media, video games, music video, newspapers,
- magazines, advertising and marketing)
- print forms (newspapers, magazines, advertising and marketing).



# Music

## A-LEVEL

You will study performance as a soloist and as part of an ensemble, undertake stylistic and free compositions, analyse a range of music, complete harmonic exercises, demonstrate aural perception and general musicianship.

There are many opportunities for you to join the numerous bands, choirs and orchestras that run every week. You may have the opportunity to run a band /choir yourself – something that would not be possible at a sixth form college without a school attached.

We have excellent resources; we use industry standard software within our recording studio and have excellent performance spaces which you are welcome to use.

### Entry Requirements

Grade 6 in Music

or Grade 6 Practical & Grade 5 Music Theory



### Assessment

One external examination

Two performance pieces

Two compositions

### What it can lead to

- Performer
- Composer
- Music Therapist
- Writer/Journalist
- A&R Representative
- Concert Organiser
- Manager
- Lawyer
- Accountant

# Photography

## A-LEVEL

The A Level photography course is an endorsed Art and Design specialism. You will be encouraged to use formal elements and creative skills in your artwork therefore giving visual form to individual thoughts, feelings and ideas. Your camera will be equivalent to any other art medium, a tool to be explored and experimented with enabling you to create finished, polished outcomes or the foundation to something altogether more experimental and challenging. This is a very challenging course throughout both years and you will need to learn new technical skills and as well as using artistic processes.

- Using a 35mm Single Lens Reflex Camera.
- Studio lighting techniques.
- Black and white developing and printing.
- Digital photography and photo manipulation.
- Artist Research and contextual studies and Critical analysis.

### Entry Requirements

Grade 5 in Art or a relevant Designs & Technology course

### Assessment

60% of your mark is based on your coursework project

40% is based on the controlled assignment

### What it can lead to

Freelance Photographer, Natural History, Fashion or Sport, there are a diverse selection of Photographic careers accessible following University study or apprenticeship but Photographers can also work in the fields of Advertising, Journalism even Forensics so it is often a good complementary subject to take alongside another passion.



# Physical Education

## A-LEVEL



There are three sections within this diverse and engaging course:

- Applied Anatomy and Physiology & Exercise Physiology and Biomechanics
- Skill Acquisition & Sport Psychology
- Sport and Society & Technology in Sport

### Entry Requirements

Grade 66 in Science

Grade 6 in either English

Grade 6 in Mathematics

Grade 6 in PE, if studied. Must take part in at least one competitive sport outside of school

### Assessment

Two external examinations

You will also complete a written analysis of your own sporting performance and also be assessed on your practical ability in one sport.

### What it can lead to

A qualification in PE can open many doors, with employers recognising increasingly the importance of health and well-being.

Those of you wishing to stay within the sports industry, a course in A-Level PE can lead to coaching roles, teaching, physiotherapy biomechanics, sports science, personal training, or a whole host of leadership roles.

# Physics

## A-LEVEL

Across the 2 years of the A Level course you will cover:

- Measurements and their errors
- Particles and radiation
- Waves
- Mechanics and materials
- Electricity
- Further mechanics and thermal physics
- Fields and their consequences
- Nuclear physics
- Astrophysics

### Entry Requirements

Grade 7 in Physics or Grade 77 in Science

Grade 7 in Mathematics

### Assessment

Three external examinations

### What it can lead to

Possible career choices include Engineering (all disciplines), finance, law, teaching, research, technical author, meteorologist, banking, finance and many more



# Politics

## A-LEVEL



John signs the Great Charter.



### Entry Requirements

Grade 6 in either English.

GCSE Geography or History is desirable.

### Assessment

Three external examinations

Over your two years, you will explore:

- How people and politics interact; the emergence and development of the UK's democratic system and the role and scope of political parties
- How the UK government works; recognise where, how and by whom political decisions are made (e.g. Parliament, the Prime Minister, the judiciary)
- Key political ideas of conservatism, liberalism, socialism and one of feminism or nationalism; you will understand how these ideas and principles apply in practice to human nature, the state, society and the economy.
- The international dimension of global politics. We live in a complex world with significant challenges, including global terrorism, poverty, weapons proliferation, environmental degradation and pandemics.

### What it can lead to

Politicians use their broad range of skills to stand up for what they believe in, and what's right.

Using their intelligence and communication skills, along with their powers of persuasion, politicians fight for the chance to change society for the better.

Whether you want to become a politician like an MP, or you are simply fascinated by the subject, an A Level in Politics will equip you with a range of transferable skills that will serve you well in many careers, including law, finance, journalism, charities and the civil service.

# Psychology

## A-LEVEL

Across the two years, you will study the following:

- Social Influence
- Memory
- Psychopathology
- Attachment
- Approaches in Psychology
- Biopsychology
- Research Methods
- Issues and debates in Psychology
- Forensic Psychology
- Cognition & Development
- Schizophrenia

### Entry Requirements

Grade 6 in either English

Grade 6 in Mathematics

Grade 66 in Science

### Assessment

Three external examinations

### What it can lead to

Possible career choices include all forms of applied psychology, such as clinical, forensic, health, exercise and educational psychology.

Careers in occupational therapy, counselling, and business or marketing are also very popular.

Studying Psychology is also a strong foundation for careers in business development, accountancy, human resources, nursing, teaching and the military.



# Religious Studies

## A-LEVEL

You will study a range of philosophical approaches to life and learn to construct convincing arguments and how to articulate your views, as well as developing your ability to effectively analyse and evaluate alternative viewpoints. The course is divided into three areas:

Philosophy of Religion:

- Ancient Philosophical Influences: Plato and Aristotle
- Soul, Mind and Body
- Arguments for the Existence of God
- The Problem of Evil
- Religious Experience
- The Nature of God
- Religious Language

Ethics:

- Natural Law
- Utilitarianism
- Euthanasia
- Conscience
- Business Ethics
- Sexual Ethics

Developments in Christian Thought:

- Augustine and Human Nature
- Death and the Afterlife
- Religious Pluralism
- Gender and Theology
- The Challenge of Secularism
- Liberation Theology and Marx

### Entry Requirements

Grade 6 in Religious Studies

Grade 6 in either English

### Assessment

Three external examinations

### What it can lead to

This skills developed lend themselves to a plethora of careers such as; law, journalism, teaching charity work, social work, consultancy, publishing, project management and politics.



# Sociology

## A-LEVEL

Over the course of the A Level in Sociology you will study three units. All three will be examined in the summer of Year 13:

- Education with Theory & Methods
- Topics in Sociology (Families & Households and Beliefs in Society)
- Crime and Deviance with Theory & Methods

### Entry Requirements

Grade 6 in either English

### Assessment

Three external examinations

### What it can lead to

It can lead to possible careers in the police, social work, community development, the education sector, the prison service, journalism and the media, social researcher and academia.

It can also lead to opportunities to work in national and local government such as housing officers, family officers, civil service and policy coordinator



## What it can lead to

- Translator
- Interpreter (including UN, defence forces, police force)
- Language intelligence
- Tourism/ travel industry
- Teacher- in both the UK and abroad, International Law

# Spanish

## A-LEVEL

For Spanish you will study the following:

### *Year 12:*

In your first year, you will learn about the Spanish-speaking world. You will rapidly develop spoken fluency and cover the following topics:

- Changes in family structure
- Education in Spain and student issues
- Working life in Spain and sexual equality
- Music, media, festivals and traditions in the Spanish speaking world. You will also study a film and learn about key events in Spanish history through this medium

### *Year 13:*

In your second year, you will develop your thoughts on more complex issues such as immigration, integration and multiculturalism and reflect on the Franco dictatorship during the 1930s and the coup d'état of 1981.

You undertake an independent research project of your choice, which is assessed in the speaking exam

### Entry Requirements

Grade 6 in Spanish

### Assessment

Three external examinations



# Textiles

## A-LEVEL

The course invites you to consider the aesthetic. If you are interested in how things look; fashion, textile art, pattern design and printing, then this is for you.

Textiles is a highly creative subject and will complement other creative subjects as well as more theory based qualifications. The course involves a range of practical and folder-based work focusing on a range of design topics.

You will develop an awareness of the elements of textile design, such as shape, line, scale, colour, texture, pattern, contrast and repetition in relation to textile design.

You will explore a range of briefs to develop an awareness of intended audience or purpose, alongside an ability to respond to an issue, concept or idea.

As your confidence develops you will enhance your appreciation of the relationship of form and function and, where applicable, the constraints of working to a brief.

### Entry Requirements

Grade 5 in Design & Technology or Art.

Students should have studied Textiles or Art at GCSE, however students with Graphic Products GCSEs will find the course accessible.

All students with a strong interest in the subject will be considered.

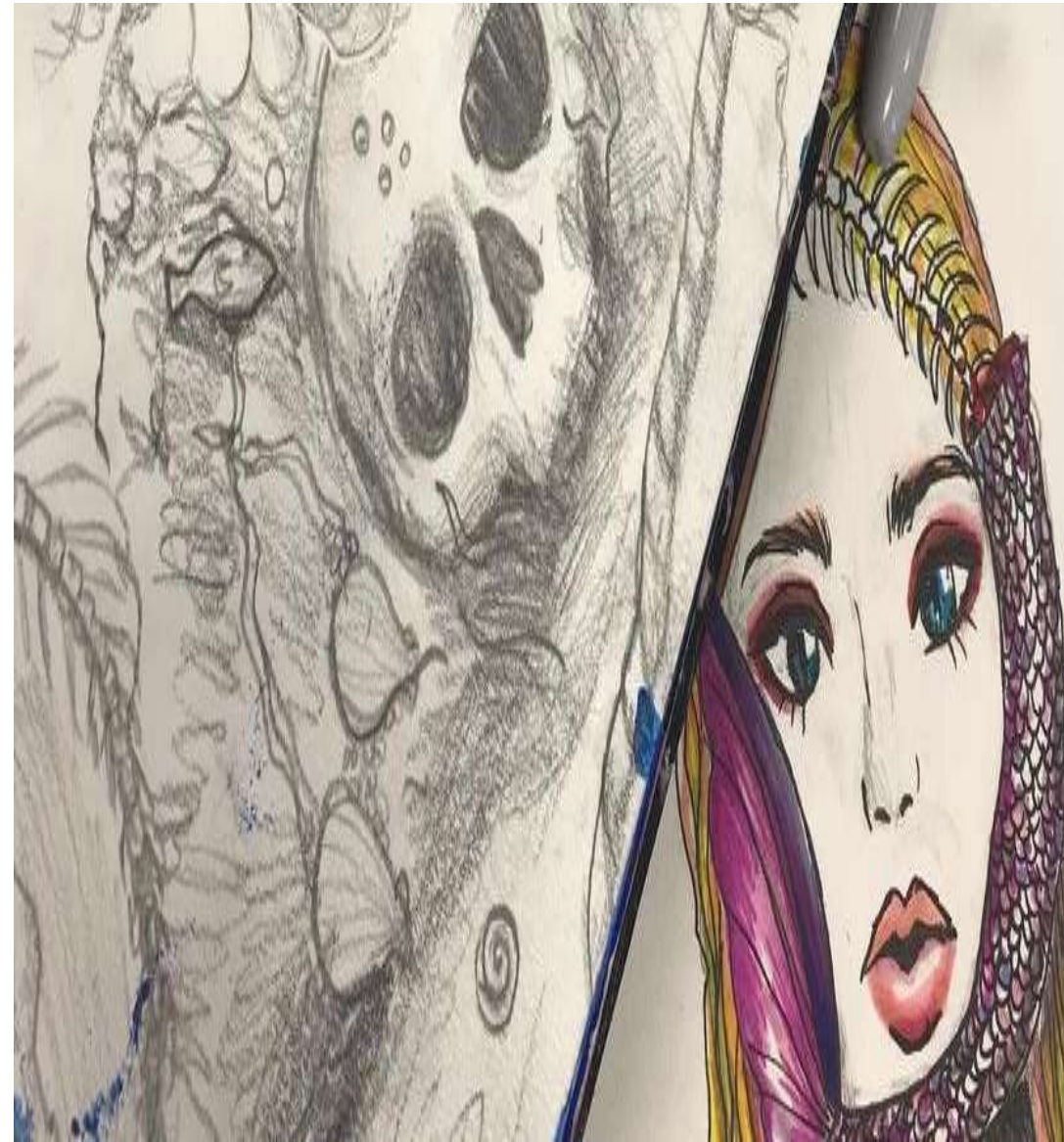
### Assessment

Three external examinations

### What it can lead to

This course is valued by universities and is an accepted qualification for many courses. Textiles will prepare students for a future in textile art, fashion, costume design, millinery, interior design, as well as be a welcome A-level for degree subjects that are not art related.

The creativity, presentation and project-based aspect of the course and the time-management skills required, appeal to employers and course providers alike.



## Entry Requirements

Grade 5-5 in Science.

Interest in science and the scientific process

**Year 1:** The year starts with the principles and applications of science unites including topics such as:

- animal and plant cells
- tissues
- atomic structure and bonding;
- chemical and physical properties of substances related to their uses
- waves and their application in communications.

We also complete the Practical Scientific Procedures and Techniques unit, which introduces you to standard laboratory equipment and techniques, including titration, colorimetry, calorimetry, chromatography, calibration procedures and laboratory safety.

**Year 2:** Learners will cover the stages involved and the skills needed in planning a scientific investigation: how to record, interpret, draw scientific conclusions and evaluate in the Science Investigation Skills unit.

They will then go on to study biological molecules and metabolic pathways and how these enable organisms to function normally.

## Assessment

Two external examinations

Two pieces of coursework

# Applied Science

## AAQ

### What it can lead to

This is a really valuable qualification for anyone hoping to work in a scientific field including healthcare, laboratory work, sports science as well as applications for scientific degrees and apprenticeships

Students will leave the course with a good selection of "soft skills" including being able to manage their time, deliver work to deadlines, use a variety of ICT resources and present to a group.





# Business

## BTEC

This BTEC qualification is a practical course that involves independent research, analysing and interpreting data, considerable use of ICT and working to deadlines. You will learn about the various areas within business organisations and also the business environment.

This BTEC qualification has been developed to provide:

You with the opportunity to enter apprenticeships and employment in the business sector or to progress to higher level qualifications in business.

You with the opportunity to develop a range of skills and techniques, personal skills and attributes essential for successful performance in working life.

an introduction to and understanding of the business environment, management of resources, marketing and communication – all fundamental to the success of business organisations.

opportunities for you to develop your communication skills as you progress through the course.

### Entry Requirements

Level 2 Merit in Business, if studied

### Assessment

One external examination

One set task

Two pieces of coursework

### What it can lead to

This course has a vocational slant and provides an excellent preparation for immediate entry into the world of work or university.

Whatever your skill set, there is a role within a business organisation to suit you, from financial analysis to customer facing roles to social media marketing campaigns.

# Health and Social Care

## BTEC

In Year 1 you will study the following units:

- Human Lifespan & Development. This examined unit will develop your knowledge and understanding of physical, intellectual, emotional and social development across the human lifespan. You will also consider the factors that affect development and the effects of aging.
- Human Biology & Health. This examined unit will develop your knowledge of the human body and how the body systems work together for normal physiological functioning. This will enable you to understand the effects of common disorders on the body and on health

In Year 2 you will study the following units:

- Principles of Health & Social Care Practice. You will focus on the principles that underpin meeting the care and support needs of individuals, which are the foundation of all services within health and social care. This unit introduces you to the core values expected of NHS and social care professionals which underpin professional standards, skills and attributes and how these should be applied in practice to meet the needs of individuals in health and social care environments.
- Promoting Health Education. You will explore the purpose of health education, models and approaches to educating the public and encouraging behaviour change in the population. Health education aims to promote awareness of health issues and to prioritise the health of the population. It helps reduce susceptibility to developing particular illnesses and provides advice and information on disease prevention. You will be able to consider the implications of health education activities on the current and future health of the nation.

### What it can lead to

This course can lead to lots of career choices in the Health Care system such as a social worker, nursing, youth worker, midwifery, physiotherapy, speech and language therapy and lots of other key worker roles.

### Assessment

Two external examinations

Two coursework units

### Entry Requirements

Level 2 Merit in Health & Social Care, if studied

Grade 4 in either English

Grade 4 in Mathematics

Grade 4-4 in Science



# IT: Data Analytics

## AAQ

### Assessment

Two external written examinations

Three internally assessed pieces of coursework



### Entry Requirements

Level 2 Merit in ICT, if studied

This AAQ Advanced National qualification provides students with the theoretical knowledge and hands-on experience of information technology and data use, that provides them with the understanding and skills that will prepare them for progression to the information technology sector.

Over two years you will study 5 units:

1. Fundamentals of data analytics
2. Big data and machine learning
3. Spreadsheets and data modelling
4. Database design
5. Digital Marketing

### What it can lead to

Choosing IT combines very well with lots of other courses offered at All Hallows. Studying IT will develop your problem solving and project management skills.

The course will help you in the future when you take on any form of employment because you will become experienced users of Microsoft applications.

This course provides an excellent foundation for any degree course available at university but especially those related to IT or Business.

This course can be combined with other A levels, BTECs or AAQs..

# Sport BTEC

Across the two years, you will study four modules:

- Unit 1: Anatomy and Physiology
- Unit 2: Fitness Training and Programming for Health, Sport and Well-being
- Unit 3: Professional Development in the Sports Industry
- Unit 4: Sports Leadership

## Entry Requirements

Grade 55 in Science

## Assessment

Two external examinations

Two internally assessment pieces of coursework

## What it can lead to

A qualification in Sport can open many doors, with employers recognising increasingly the importance of health and well-being, candidates with knowledge upon such are as desirable as ever.

For those wishing to stay within the sports industry, a course in BTEC Sport can lead to coaching roles, teaching, physiotherapy, sports science, personal training, or a whole host of leadership roles.





01252319211



allhallows.net



admin@allhallows.net



@allhallows

